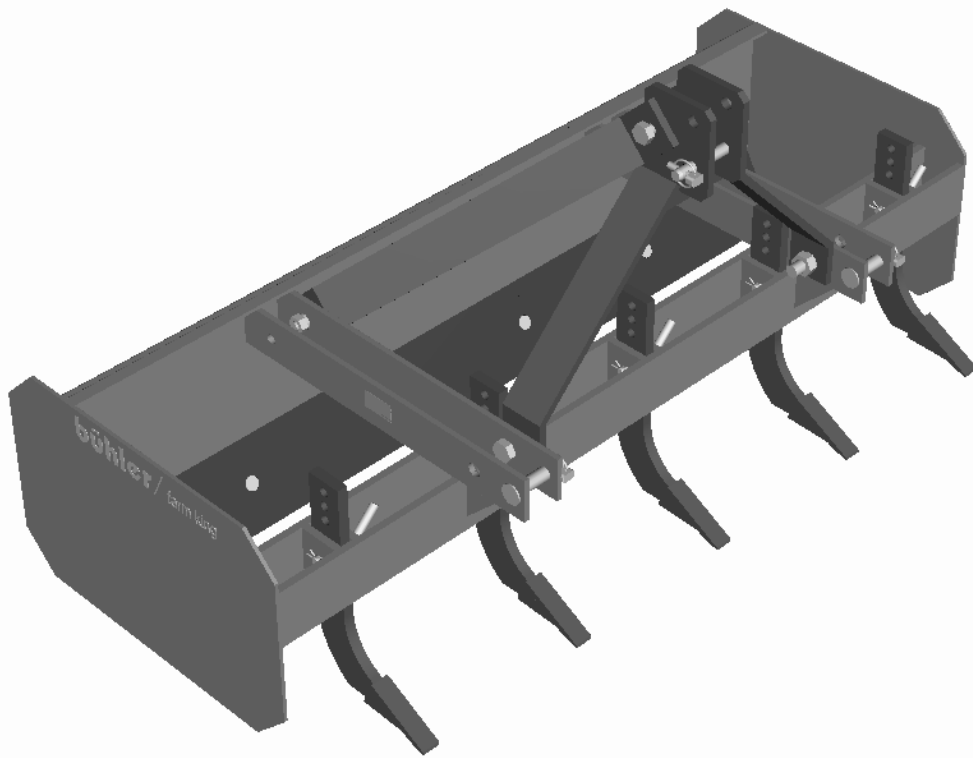


# bühler

## farm king



**48", 60", 72", & 84" Box Scraper**

Operator's and Parts Manual  
FK351

2007



**TABLE OF CONTENTS**

<b>DESCRIPTION</b>	<b>PAGE</b>
Warranty .....	1
Operation .....	2
General Safety .....	2
Mounting Scraper .....	3
Blade Replacement or Reversal .....	3
Scarifier Shank Adjustment.....	3
Box Scraper Drawing.....	4
Box Scraper Parts List .....	5
Bundle Numbers .....	6

## WARRANTY POLICY

Buhler Manufacturing products are warranted for a period of twelve (12) months (90 days for commercial application) from original date of purchase, by original purchaser, to be free from defects in material and workmanship under correct, normal agricultural use and proper applications.

Buhler Manufacturing's obligations under this warranty shall be limited to the repair or exchange, at Buhler Manufacturing's option, of any Buhler Manufacturing product or part which proves to be defective as provided. Buhler Manufacturing reserves the right to either inspect the product at the buyer's location or have it returned to the factory for inspection.

The above warranty does not extend to goods damaged or subject to accident, abuse or misuse after shipment from Buhler Manufacturing's factory, nor to goods altered or repaired by anyone other than an authorized Buhler Manufacturing representative.

Buhler Manufacturing makes no Express Warranties other than those, which are specifically described. Any description of goods, including any references and specifications in catalogues, circulars and other written material published, is for the sole purpose of identifying goods and shall conform to such descriptions. Any sample or model is for illustrative purposes only and does not create an Express Warranty that the goods conform to sample or model shown.

The purchaser is solely responsible for determining suitability of goods sold. This warranty is expressly in lieu of all other warranties expressed or implied. Buhler Manufacturing will in no event be liable for any incidental or consequential damages whatsoever. Nor for any sum in excess of the price received for the goods for which liability is claimed.

### **WARRANTY CLAIMS:**

Warranty requests must be prepared on Buhler Manufacturing Warranty Claim Forms with all requested information properly completed. Warranty Claims must be submitted within a thirty (30) day period from date of failure repair.

### **WARRANTY LABOR:**

Any labor subject to warranty **must** be authorized by Buhler Manufacturing. The labor rate for replacing defective parts, where applicable, will be credited at 100% of the dealer's posted shop rate. Defective parts will receive an extra 10% discount to assist with freight or other incidental costs.

### **GOVERNMENT LEGISLATION:**

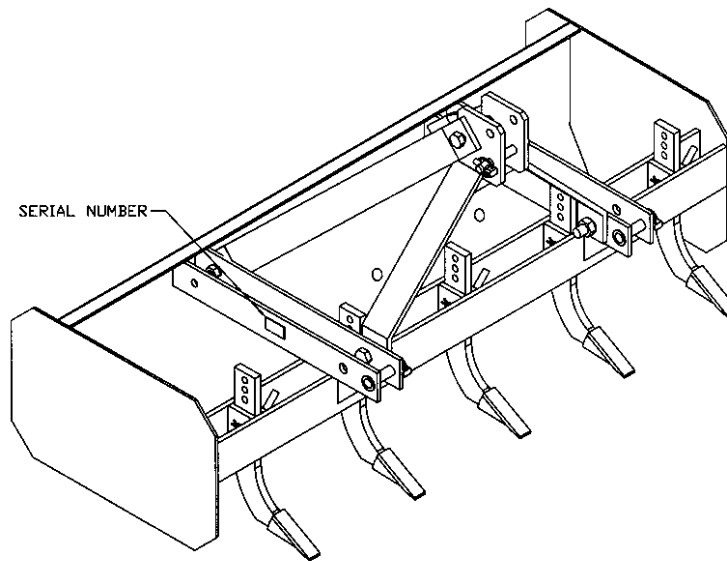
Warranty terms and conditions are subject to Provincial or State legislation.

### **IMPORTANT FACTS:**

Buckets and Bucket Tines Carry No Warranty  
Bent Spears Carry No Warranty  
Snowblower Fan Shafts Carry No Warranty  
Mower Blades Carry No Warranty  
Portable Auger Parts Have Two (2) Year Warranty  
Loader Parts Have Two (2) Year Warranty

**IMPORTANT NOTE: This warranty does not apply to rentals**

## OPERATION



BX-02

This machine is available in widths of 48", 60", 72" and 84" to handle all jobs. All are supplied with removable scarifier shanks to allow the operator to break up the hard surface and level in one trip. The scraper blade is reversible to double its life and has a double mounting system that allows the operator to move material in the forward or reverse directions. The Box Scraper is designed to be used on a tractor up to a 35 horsepower with a standard category 1 three-point hitch. To insure acceptable lift, never exceed its horsepower rating.

## GENERAL SAFETY

1. Stop engine, set brake and remove ignition key before:
  - connecting or disconnecting Box Scraper
  - servicing or making adjustments
  - unplugging or cleaning out.
2. Securely block Box Scraper in the up position before working beneath unit.
3. Do not allow riders.
4. Clear the area of people and foreign objects before starting the tractor.
5. Use hazard warning lights and a SMV sign when transporting.

### **MOUNTING SCRAPER**

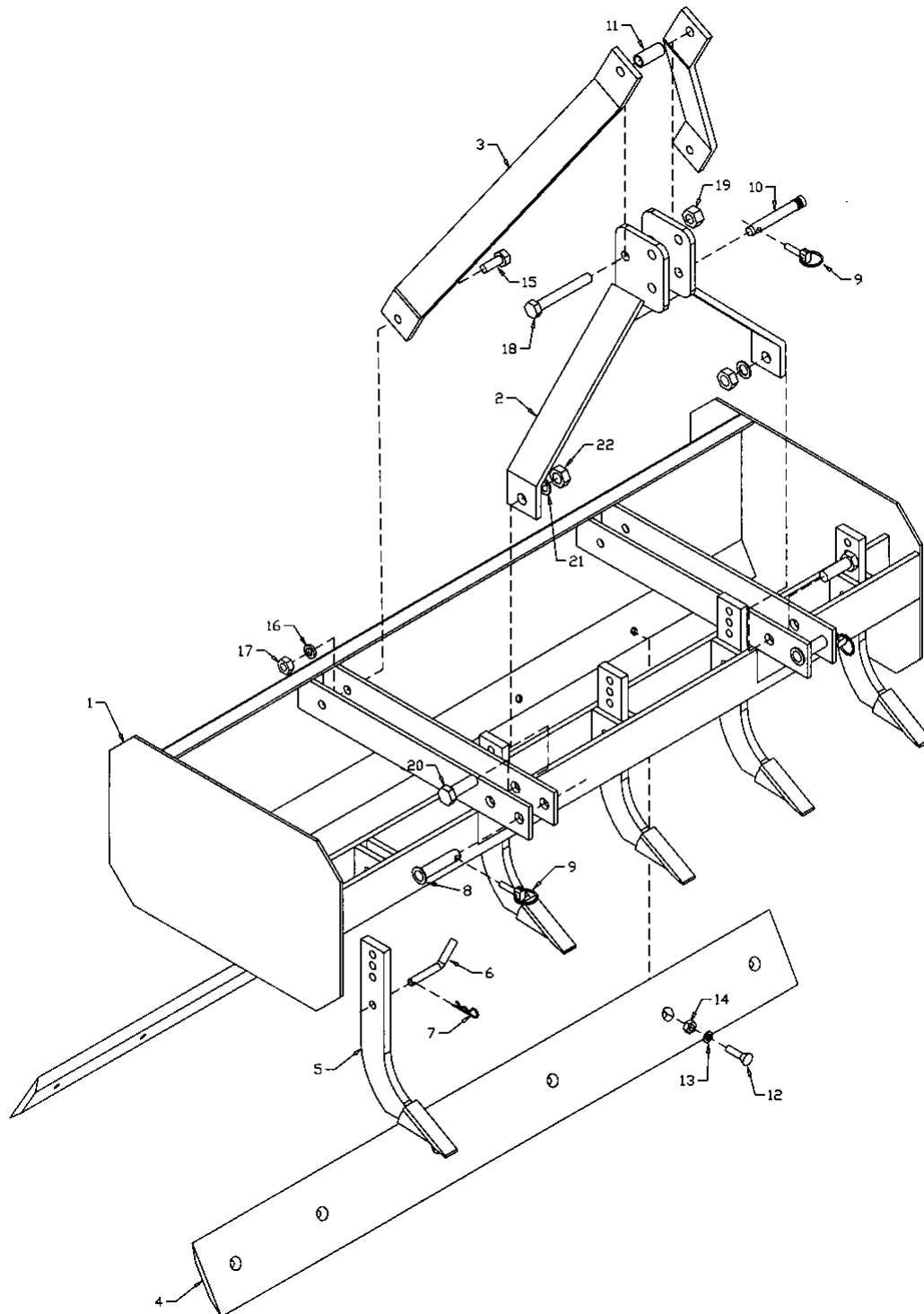
1. Bolt the hitch (#2) and hitch braces (#3) to the frame (#1) using hardware supplied.
2. Use the position or draft mode on the three-point control to make a cut at constant depth. Use float when you want the scraper to follow the contour of the ground. The weight of the scraper itself will keep the blade at the desired depth.
3. Use the scarifier shanks to break up hard or packed surfaces. If it is necessary to add weight to the blade, use a maximum of 200 lbs.
4. The two blades allow the operator to scrape or level in either direction. The shanks should be used to break up compacted material ahead of the blade.

### **BLADE REPLACEMENT OR REVERSAL**

1. Raise the Box Scraper off the ground.
2. Securely block up the frame.
3. Remove blade mounting bolts.
4. If the top side of the blade has not been used, reverse and reattach. If it has been used, replace blade.
5. Install mounting bolts and re-tighten.

### **SCARIFIER SHANK ADJUSTMENT**

1. Raise the Box Scraper off the ground.
2. Securely block up the frame.
3. Remove shank pins.
4. Install, adjust height or remove as desired. Always keep shanks at the same depth for best results.
5. Install shank pins.



BX-01

**WHEN ORDERING PARTS**

Always give your dealer the Model, Color and Serial Number of your machine to assist him in ordering and obtaining the correct parts. Use the exploded view and tabular listing of the area of interest to exactly identify the required part.

**BOX SCRAPER PARTS LIST**

<b>ITEM</b>	<b>PART #</b>	<b>DESCRIPTION</b>
1	909628	48" Box Frame
	967551	60" Box Frame
	967552	72" Box Frame
	967553	84" Box Frame
2	F0351	Hitch Weldment
3	906748	Hitch Brace 1/2" x 3" x 27 3/4"
4	909622	48" Cutting Edge
	967520	60" Cutting Edge
	967521	72" Cutting Edge
	967522	84" Cutting Edge
5	967576	Scarifier Shank
	967470	Knock-on Point Only
6	967556	Shank Pin 9/16" x 5"
7	961012	#16 Hair Pin Clip
8	967361	7/8" x 4" Clevis Pin
9	965911	7/16" Linch Pin
10	965807	Cat. 1 Top Link Pin
11	906770	Spacer 1"OD x 12GA x 2 1/4" Long (pl)
12	967524	1/2" x 1 1/2" Plow Bolt (pl)
13	81637	1/2" Lock Washer (pl)
14	81636	1/2" Hex Nut (pl)
15	84270	5/8" x 1 3/4" Hex Bolt (pl)
16	81677	5/8" Lock Washer (pl)
17	81676	5/8" Hex Nut (pl)
18	812114	3/4" x 5 1/2" Hex Bolt (pl)
19	812365	3/4" Lock Nut (pl)
20	966527	7/8" x 2 1/2" Hex Bolt (pl)
21	81723	7/8" Lock Washer (pl)
22	81722	7/8" Hex Nut (pl)

**BOX SCRAPER BUNDLE NUMBERS****QUANTITY BUNDLE NO. DESCRIPTION****Y48BS 48" BOX SCRAPER**

1	F0351	Hitch
1	F0801	Frame

**Y60BS 60" BOX SCRAPER**

1	F0351	Hitch
1	F0368	Frame 60"

**Y72BS 72" BOX SCRAPER**

1	F0351	Hitch
1	F0369	Frame 72"

**Y84BS 84" BOX SCRAPER**

1	F0351	Hitch
1	F0370	Frame 84"

**BOX SCRAPER OPTIONS**

967576	Scarifier Shank
--------	-----------------

## NOTES



## DIVISION LOCATIONS

Farm King Division  
301 Mountain Street S.  
Morden, MB R6M 1X7  
Ph.: (204) 822-4467  
Fax: (204) 822-6348

Allied Division  
1201 Regent Ave. W.  
Box 1003  
Winnipeg, MB R2C 3B2  
Ph.: (204) 661-8711  
Fax: (204) 654-2503

Inland Division  
675 Washington Ave.  
Winnipeg, MB R2K 1M4  
Ph: (204) 667-7854  
Fax: (204) 669-2599

B.I.I. Division  
1330 43<sup>rd</sup> Street N.W.  
Fargo, ND 58102  
Ph: (701) 282-7014  
Fax: (701) 282-5865

## CANADIAN WAREHOUSES

B.C., Abbotsford  
(604) 864-2665

AB, Edmonton  
(403) 962-6991

SK, Regina  
(306) 781-2300

ON, Woodstock  
(519) 539-0435

ON, Jasper  
(613) 283-1758

QC, Dorion  
(450) 455-4840

## U.S. WAREHOUSES

AR, West Memphis  
(870) 732-3132

GA, Stone Mountain  
(770) 908-9439

IA, Lakeview  
(712) 657-8585

ID, Meridian  
(208) 887-6006

IN, Clarksville  
(812) 284-3376

KS, Wichita  
(316) 265-9577

MN, Lakeville  
(952) 469-5267

MT, Billings  
(406) 248-7771

ND, Bismarck  
(701) 223-1886

ND, Fargo  
(701) 282-7003

NY, Syracuse  
(315) 463-5276

OH, Youngstown  
(330) 793-0862

OR, Portland  
(503) 234-0378

SD, Huron  
(605) 352-8616

TX, Houston  
(713) 928-2632

UT, Salt Lake City  
(801) 972-4321

WI, Portage  
(608) 742-1370

## OFFSHORE WAREHOUSES

Burando Hill  
Katanning  
W. Australia  
011-618-98-214422

Chihuahua, Mexico  
011-52-158-90306

John Kerr Equipment Ltd.  
Wilcoxholm Farm  
Linlithgow, W. Lothian  
Scotland  
011-441-506-842280

Skovde, Sweden  
011-46-500-452651

Naestved, Denmark  
011-45-557-29511

# bühler

Buhler Manufacturing "a partnership"

301 Mountain Street S.  
Morden MB.  
R6M 1X7  
Ph.: (204) 822-4467  
Fax: (204) 822-6348  
[www.buhler.com](http://www.buhler.com)