

## **WARRANTY REGISTRATION AND POLICY**

Buhler Manufacturing products are warranted for a period of twelve (12) months from original date of purchase, by original purchaser, to be free from defects in material and workmanship under correct, normal agricultural use and proper applications.

Buhler Manufacturing's obligations under this warranty shall be limited to the repair or exchange, at Buhler Manufacturing's option, of any Buhler Manufacturing product or part which proves to be defective as provided. Buhler Manufacturing reserves the right to either inspect the product at the buyer's location or have it returned to the factory for inspection.

The above warranty does not extend to goods damaged or subject to accident, abuse or misuse after shipment from Buhler Manufacturing's factory, nor to goods altered or repaired by anyone other than an authorized Buhler Manufacturing representative.

Buhler Manufacturing makes no Express Warranties other than those, which are specifically described. Any description of goods, including any references and specifications in catalogues, circulars and other written material published, is for the sole purpose of identifying goods and shall conform to such descriptions. Any sample or model is for illustrative purposes only and does not create an Express Warranty that the goods conform to sample or model shown.

The purchaser is solely responsible for determining suitability of goods sold. This warranty is expressly in lieu of all other warranties expressed or implied. Buhler Manufacturing will in no event be liable for any incidental or consequential damages whatsoever. Nor for any sum in excess of the price received for the goods for which liability is claimed.

### **WARRANTY CLAIMS:**

Warranty requests must be prepared on Buhler Manufacturing Warranty Claim Forms with all requested information properly completed. Warranty Claims must be submitted within a thirty (30) day period from date of failure repair.

### **WARRANTY LABOR:**

Any labor subject to warranty **must** be authorized by Buhler Manufacturing. The labor rate for replacing defective parts, where applicable, will be credited at a rate determined by the Company, Buhler Manufacturing.

### **IMPORTANT FACTS:**

**Buckets and Bucket Tines Carry No Warranty**

**Bent Spears Carry No Warranty**

**Snowblower Fan Shafts Carry No Warranty**

**Mower Blades Carry No Warranty**

**Portable Auger Parts Have Two (2) Year Warranty**

**4" UTILITY AUGER ASSEMBLY INSTRUCTIONS**

1. Fasten motor mount (#7) to the top end plate using two clamps (#11) and 5/16" x 1" hex bolts, lock washers and hex nuts.
2. Mount 6" pulley (#4) using 5/16" x 3/4" set screw.
3. Fasten grain deflector (#12) with 1/4" x 3/4" hex bolt.
4. Assemble box clamp (#8) on auger tube using existing bolts.
5. Attach handle (#3) with 5/16" machine screw and wing nut.
6. Fasten intake bottom plate (#24) using 5/16" x 1 1/4" hex bolt.
7. Mount the 2" pulley (#5) on an electric motor and assemble motor with belt (#6) on the motor mount. Be certain belt is sufficiently tight before assembling pulley guard.
8. Bolt the back section of the pulley guard (#30) to the motor mount behind the belt and pulleys using a clamp (#11). Fasten the front section of the guard (#29) to the back section using 3/16" x 1/2" stove bolts and square nuts.

**OPTIONAL FEED CONTROL**

Fasten feed control clamp (#26) approximately 37" from intake end of auger tube.

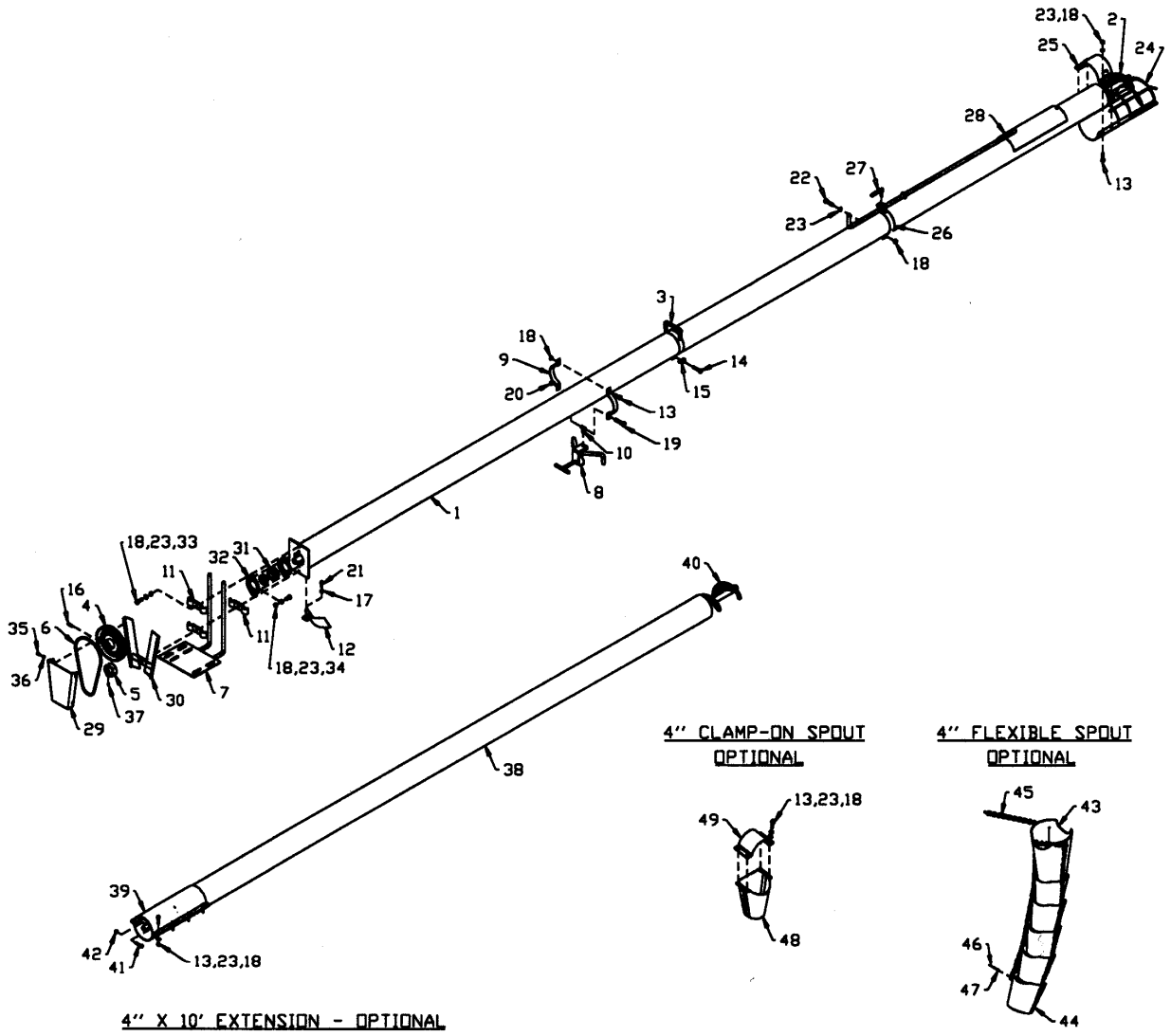
**WHEN ORDERING PARTS**

Always give your dealer the Model and Serial Number of your machine to assist him in ordering and obtaining the correct parts. Use the exploded view and tabular listing of the area of interest to exactly identify the required part.

**4" UTILITY AUGER**

| <b>ITEM</b> | <b>PART #</b> | <b>DESCRIPTION</b>                      |
|-------------|---------------|---|
| 1           | 963125        | 4" x 10' Tube                           |
|             | 963126        | 4" x 15' Tube                           |
|             | 963127        | 4" x 20' Tube                           |
| 2           | 963104        | 4" x 11' Flighting                      |
|             | 963105        | 4" x 16' Flighting                      |
|             | 963106        | 4" x 21' Flighting                      |
| 3           | 963107        | Handle                                  |
| 4           | 963110        | 6" Sheave - 3/4" Bore                   |
| 5           | 963111        | 2" Sheave - 5/8" Bore                   |
| 6           | 963112        | Belt (A-26)                             |
| 7           | 963113        | Motor Mount                             |
| 8           | 963134        | Box Clamp                               |
| 9           | 963135        | Pipe Clamp                              |
| 10          | 963136        | Clamp Swivel                            |
| 11          | 963128        | Motor Mount Clamp ('83 & Up)            |
| 12          | 963117        | Grain Deflector                         |
| 13          | 81552         | 5/16" x 1 1/4" Hex Bolt (pl)            |
| 14          | 9812393       | 5/16" x 1 1/2" RD HD Machine Screw (pl) |
| 15          | 968601        | 5/16" Wing Nut                          |
| 16          | 902944        | 6" Pulley Key                           |
| 17          | 81544         | 1/4" Hex Nut (pl)                       |
| 18          | 81568         | 5/16" Hex Nut (pl)                      |
| 19          | 811795        | 3/8" x 2" Hex Bolt                      |
| 20          | 81592         | 3/8" Hex Nut (pl)                       |
| 21          | 81525         | 1/4" x 3/4" Hex Bolt (pl)               |
| 22          | 81553         | 5/16" x 1 1/2" Hex Bolt (pl)            |
| 23          | 81569         | 5/16" Lock Washer (pl)                  |
| 24          | 963141        | Intake Bottom Plate                     |
| 25          | 963142        | Intake Clamp                            |
| 26          | 963144        | Clamp Only                              |
| 27          | 963145        | Screw Only                              |
| 28          | 963146        | Feed Control Slide Only                 |

|    |            |                                    |
|----|------------|------------------------------------|
| 29 | 963148     | Belt Guard Front Section           |
| 30 | 963149     | Belt Guard Back Section            |
| 31 | 963130     | 3/4" Bearing c/w Collar            |
| 32 | 963131     | 3/4" Flange (47MST)                |
| 33 | 812026     | 5/16" x 1" Hex Bolt (pl)           |
| 34 | 81549      | 5/16" x 3/4" Hex Bolt (pl)         |
| 35 | 9812394    | 3/16" x 1/2" Stove Bolt (pl)       |
| 36 |            | 3/16" Square Nut (Incl. With Bolt) |
| 37 | 967141     | 5/16" x 1/4" Socket Set Screw      |
| 38 | 963121     | 4" x 10' Tube                      |
| 39 | 963123     | 4" Extension Coupling              |
| 40 | 963122     | 4" x 10' Flighting                 |
| 41 | 9812348    | 1/4" x 1 1/4" Gr. 8 Hex Bolt (pl)  |
| 42 | 84498      | 1/4" Lock Nut (pl)                 |
| 43 | 902971     | 9 1/8" X 23 1/2" Top Section       |
| 44 | 902972     | 8 5/8" x 16 7/8" Bottom Section    |
| 45 | 952050-000 | 39 1/2" Chain                      |
| 46 | 967113     | Pop Rivets (AD56BS)                |
| 47 | 981358     | 1/8" BS Flat Washer (pl)           |
| 48 | 902965     | 4" Spout                           |
| 49 | 902925     | 3" X 7 1/2" Spout Clamp            |



U4-01

**4" UTILITY AUGERS – SHIPPING BUNDLES**

| <b>QUANTITY<br/>REQUIRED</b>                       | <b>BUNDLE NUMBER</b> | <b>DESCRIPTION</b>     |
|--|----------------------|------------------------|
| <b>4" x 11' UTILITY AUGER – BUNDLE NUMBER Y411</b> |                      |                        |
| 1  | F1000                | 4" x 11' utility Auger |
| 1  | F1040                | Carton of Parts        |
| <b>4" x 16' UTILITY AUGER – BUNDLE NUMBER Y416</b> |                      |                        |
| 1  | F1010                | 4" x 16' Utility Auger |
| 1  | F1040                | Carton of Parts        |
| <b>4" x 21' UTILITY AUGER – BUNDLE NUMBER Y421</b> |                      |                        |
| 1  | F1020                | 4" x 21' Utility Auger |
| 1  | F1040                | Carton of Parts        |

**OPTIONS:**

|       |                    |
|-------|--------------------|
| F1030 | 4" x 10' Extension |
| F1002 | 4" Flow Control    |
| F3001 | 4" Flex Spout      |
| F1003 | 4" Bolt-on Spout   |
| F215  | Mini Poly Hopper   |